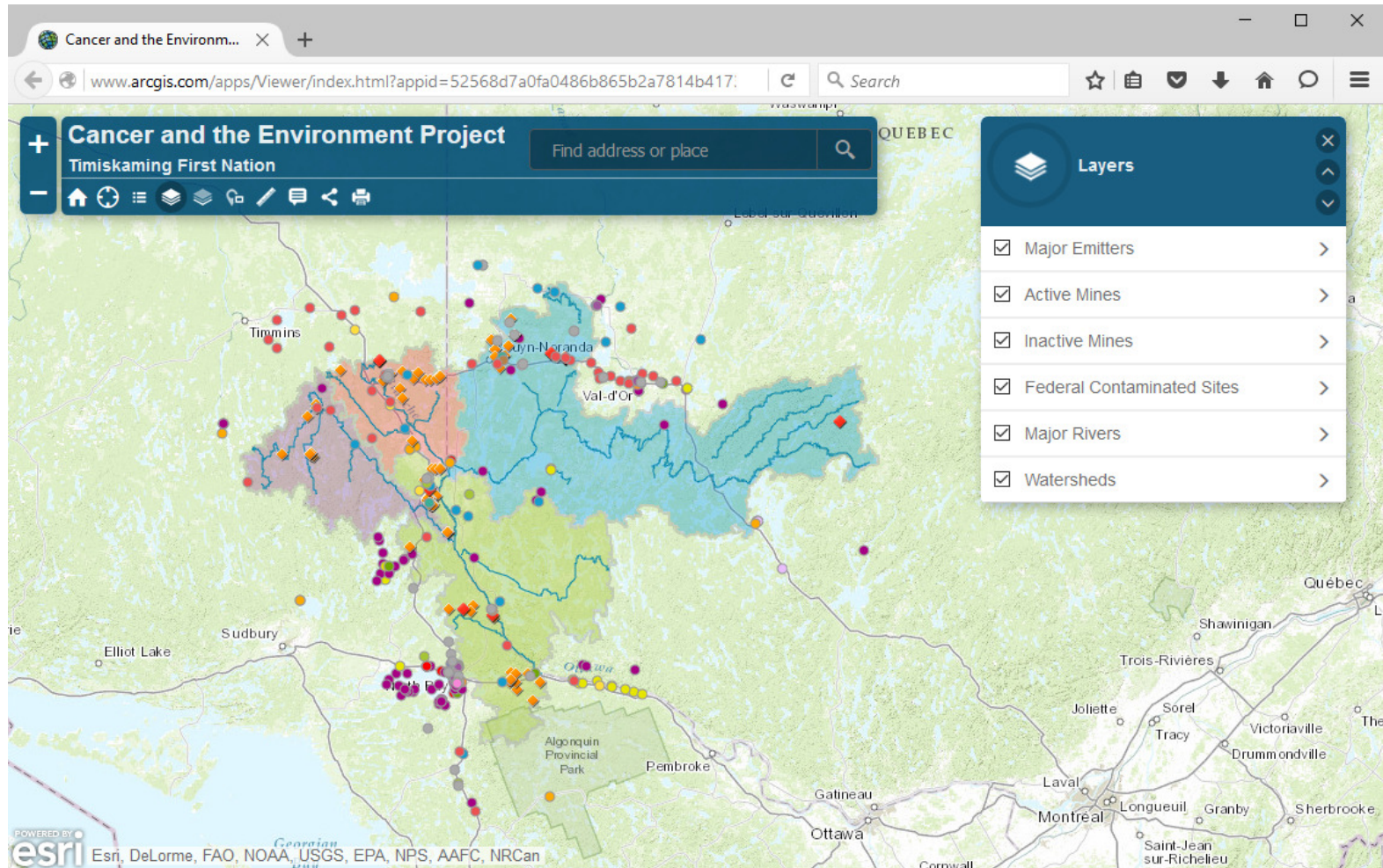
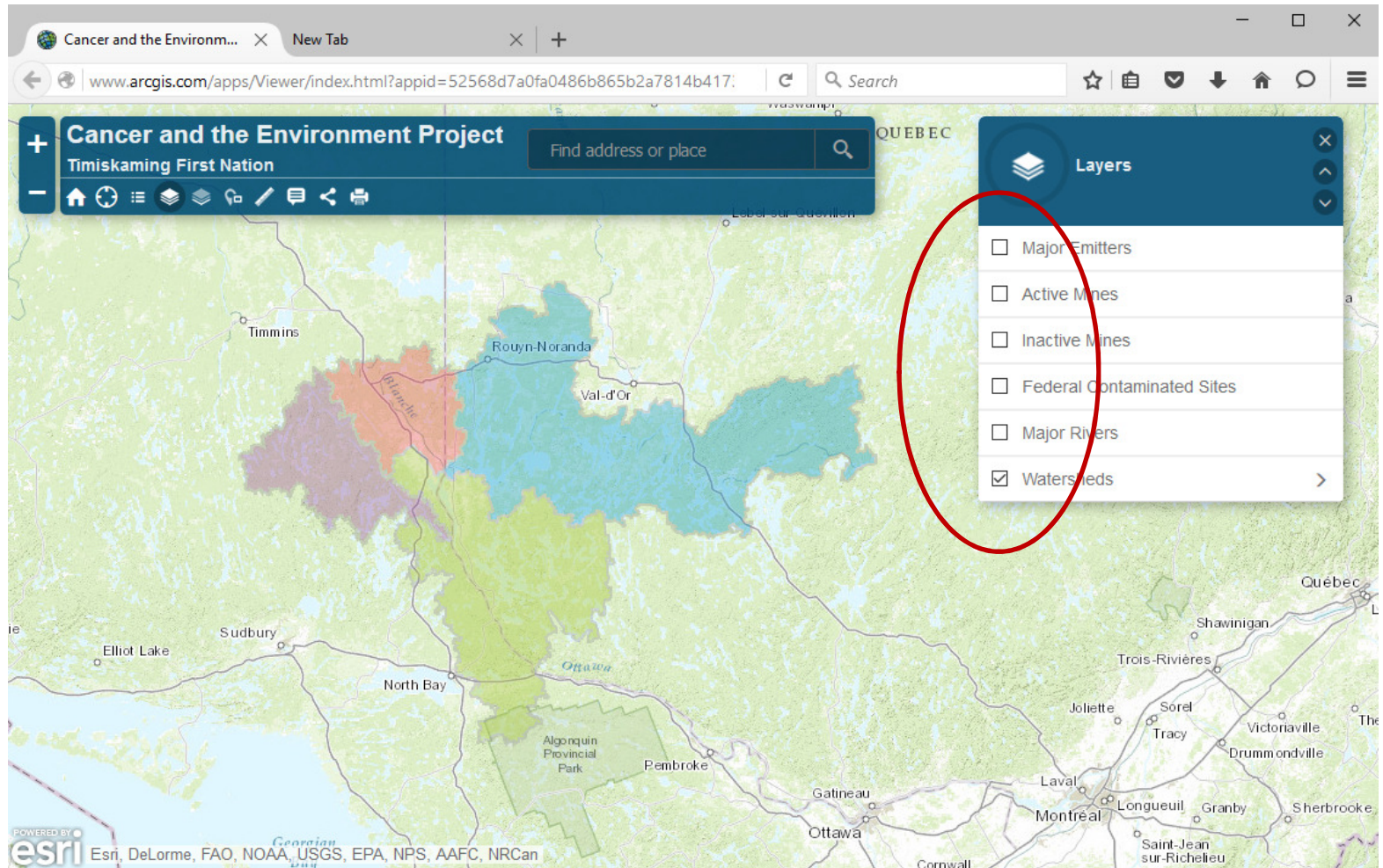


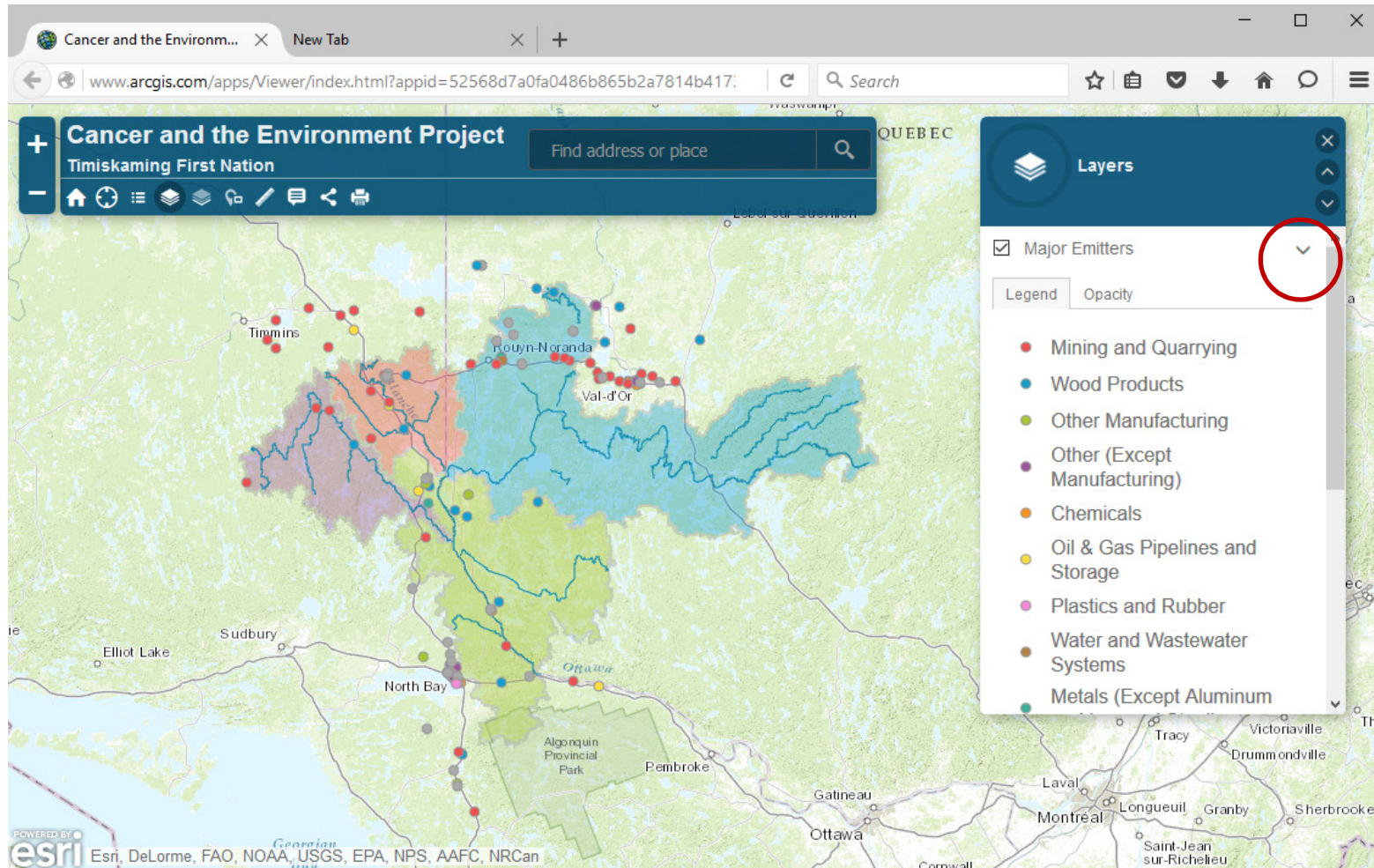
USING THE DATA BROWSER



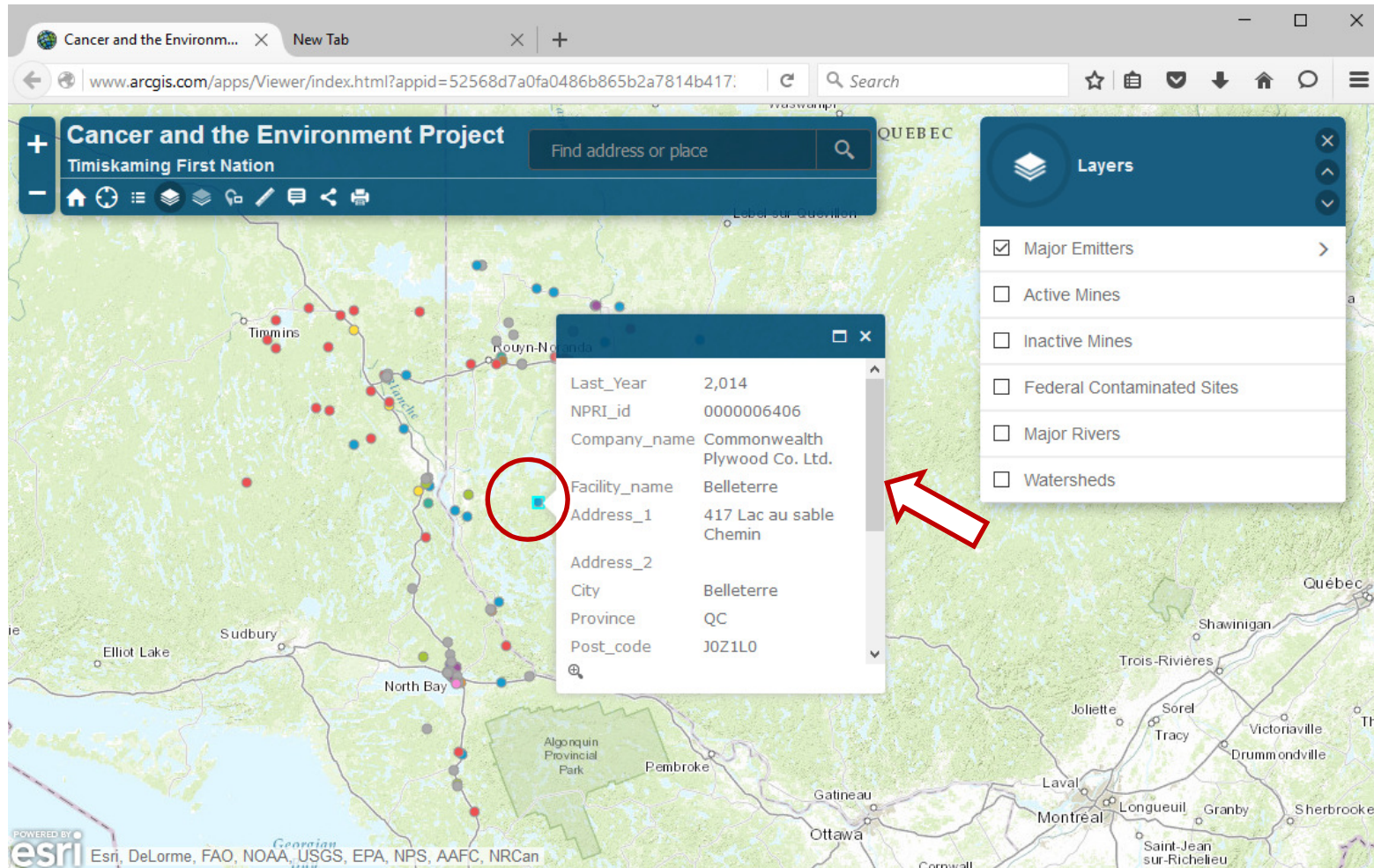
The data browser contains 6 layers of data: major emitters, active mines, inactive mines, federally listed contaminated sites, major rivers, and four watersheds that drain near the Timiskaming First Nation.



You can turn each layer 'on' or 'off' by clicking on the box next to the layer name. In this view, all layers except the watershed boundary are 'off'.



You can see the legend for each layer by clicking on the arrow to the right of the layer name.



You can see information about each feature in the layer by clicking on it in the map. If the scroll bar is showing on the right of the popup box, drag the bar down to see more information.

The screenshot shows a web browser window with the URL `www.arcgis.com/apps/Viewer/index.html?appid=52568d7a0fa0486b865b2a7814b417`. The application title is "Cancer and the Environment Project" with a subtitle "Timiskaming First Nation". A search bar is present with the placeholder text "Find address or place".

A map of Ontario is displayed with various colored dots representing data points. A pop-up window is open over a point in Belleterre, QC, showing the following details:

Address_2	
City	Belleterre
Province	QC
Post_code	J0Z1L0
LAT	47.38
LON	-78.69
Datum	1,983
Sector_Code	19
Sector_Name	wood products
NRPI_file	More info

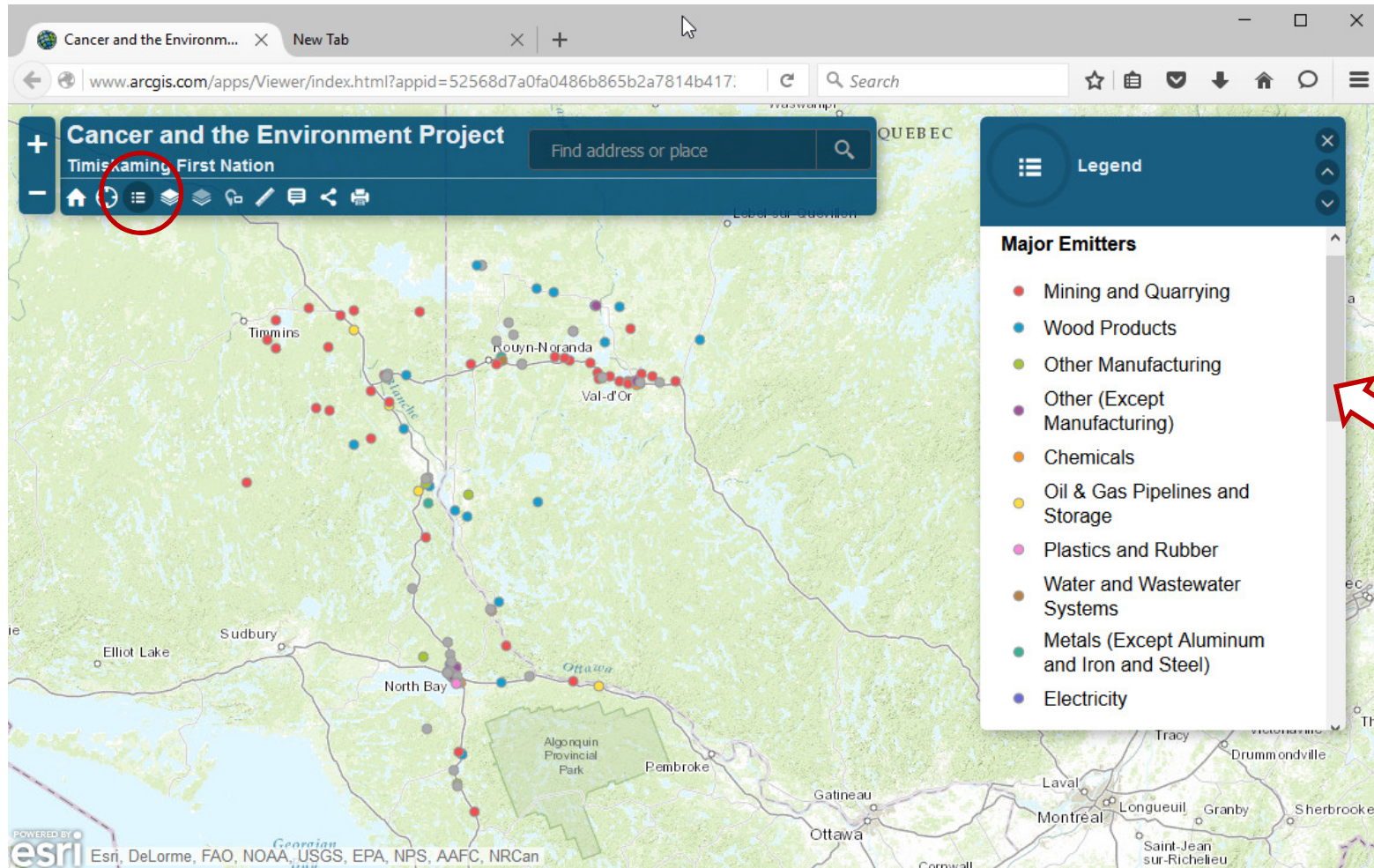
The "More info" link is circled in red. A mouse cursor is pointing at the link.

On the right side, a "Layers" panel is visible with the following layers:

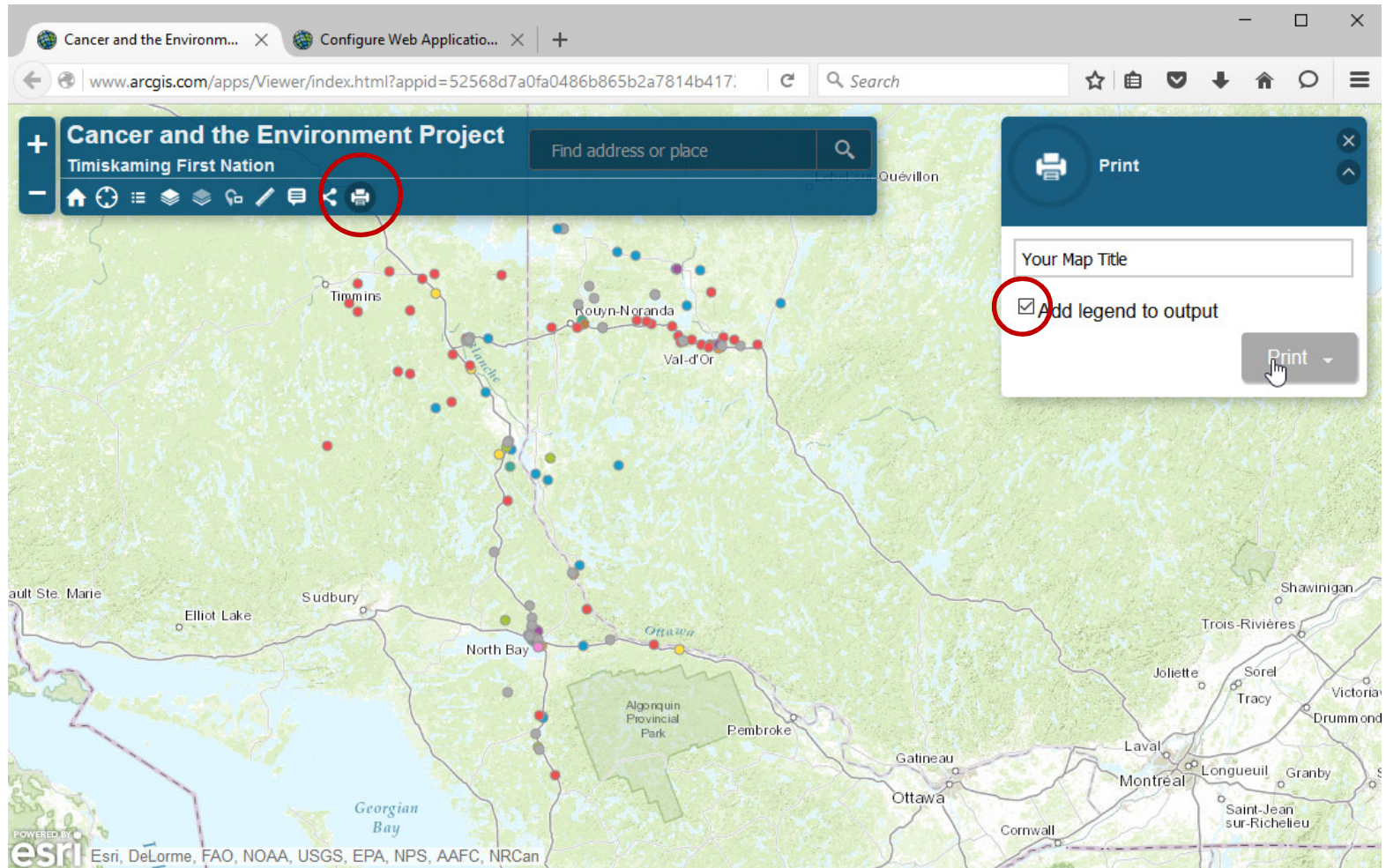
- ☒ Major Emitters
- ☐ Active Mines
- ☐ Inactive Mines
- ☐ Federal Contaminated Sites
- ☐ Major Rivers
- ☐ Watersheds

At the bottom of the map, a URL is visible: `ec.gc.ca/inrp-npri/donnees-data/index.cfm?do=facility_history&lang=En&opt_npri_id=0000006406&opt_report_year=2014`.

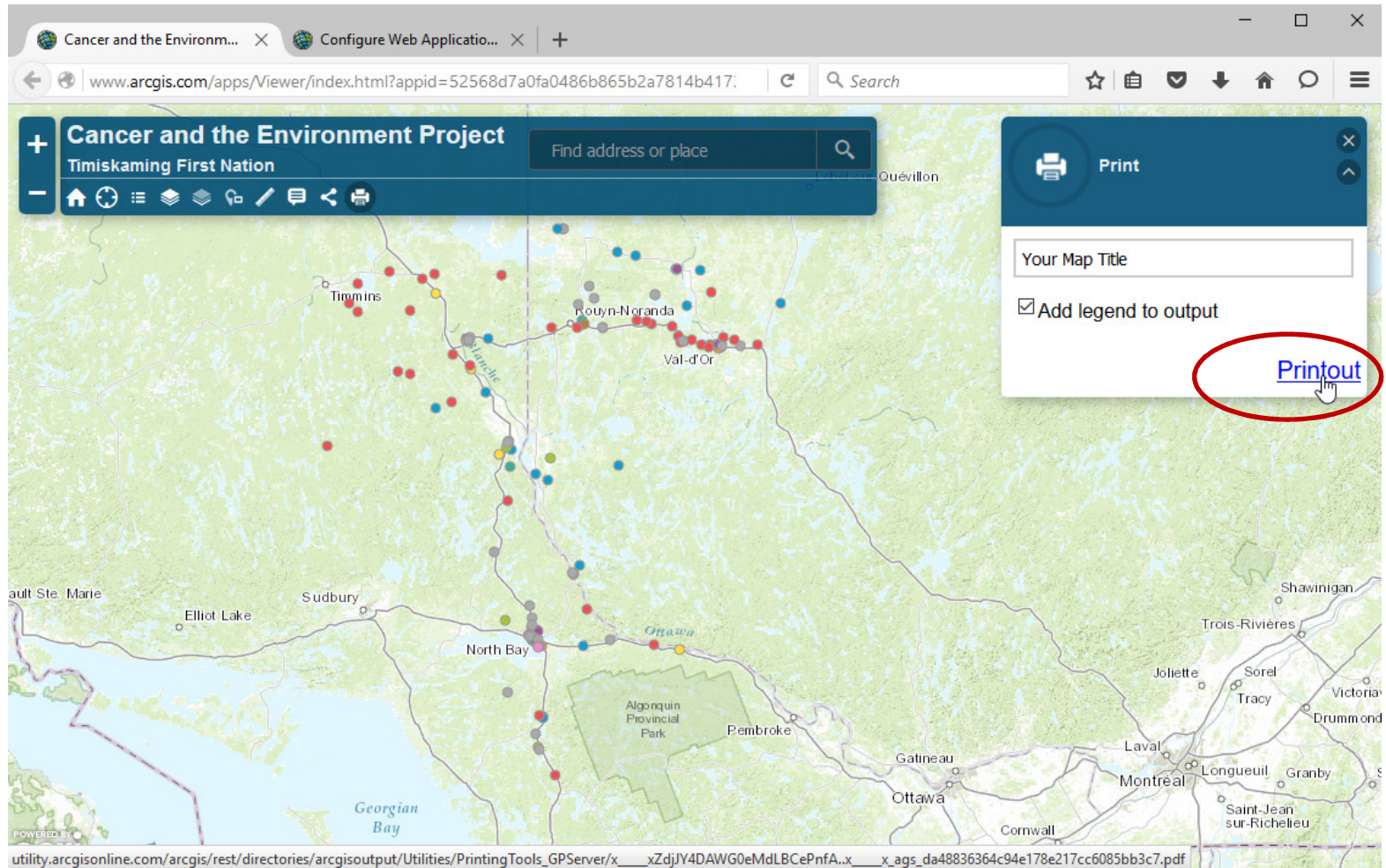
Some data layers have links to other web pages. Click on the [More info](#) link.



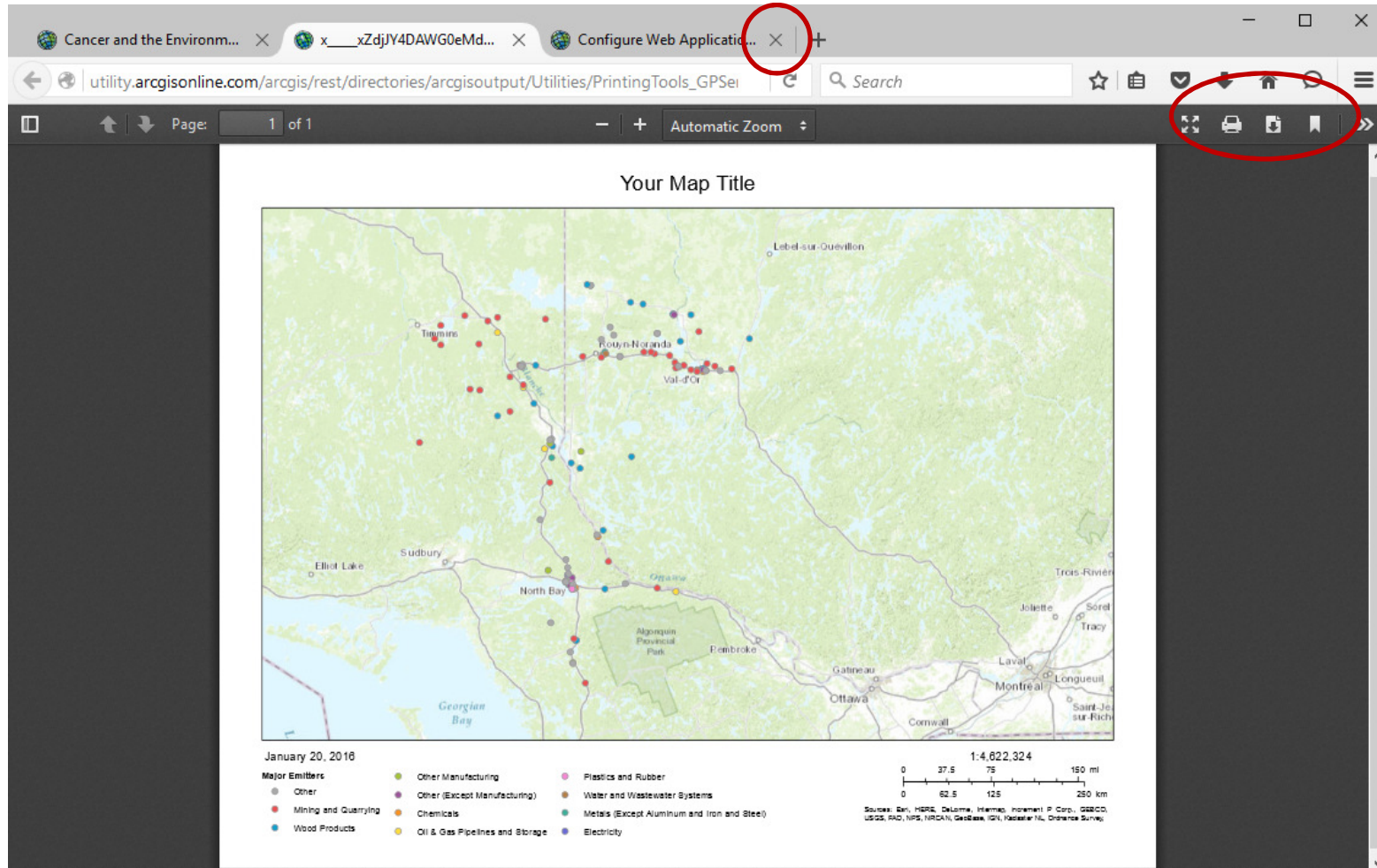
Use the LEGEND icon in the tool bar to display the legends for all the data layers. Drag the scroll bar on the right to see the legends for other layers.



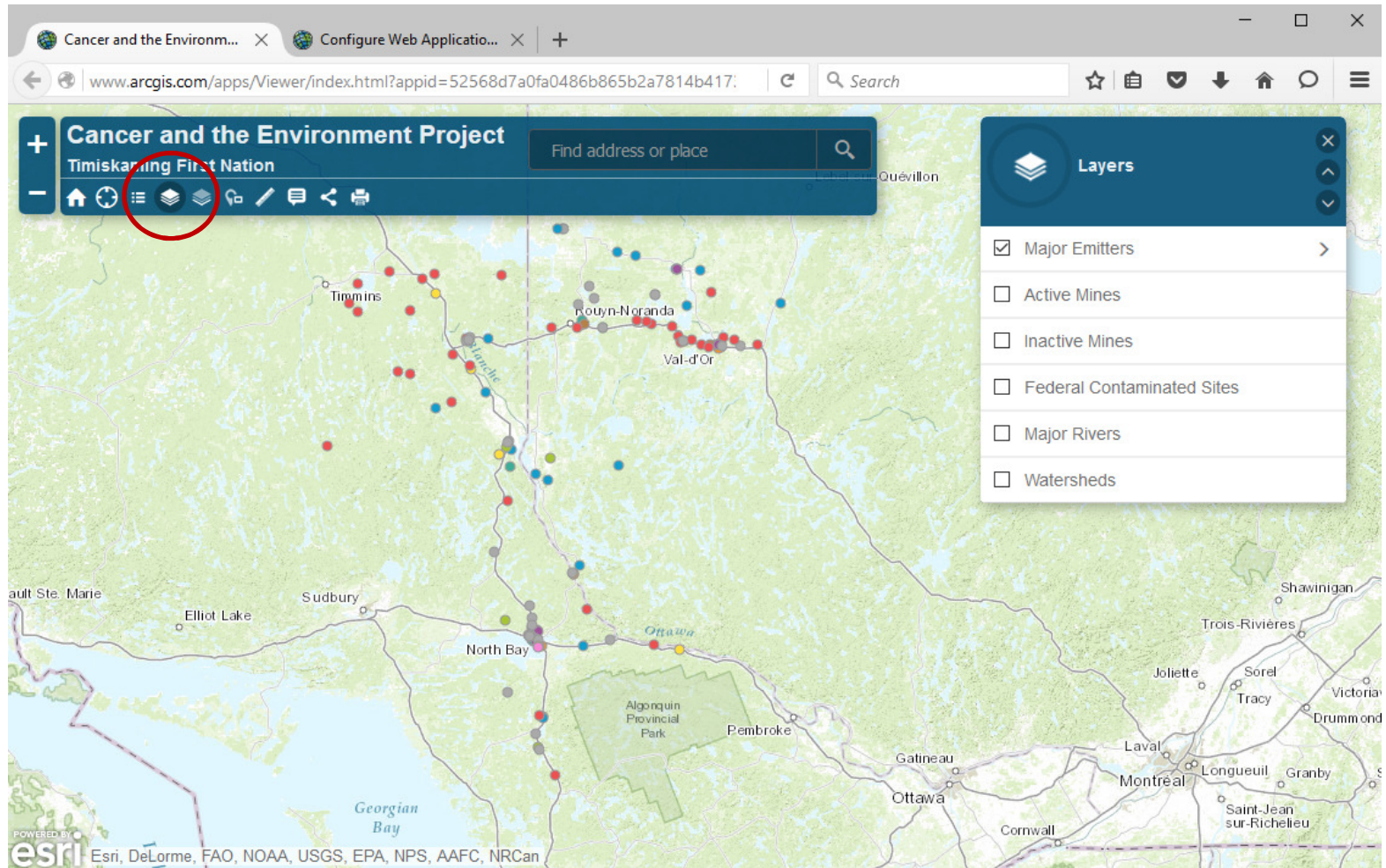
Use the PRINT icon in the tool bar to make a printable map. Only the layers that are turned on will be in the map. Add your own title, check “Add legend to output’ and click on Print.



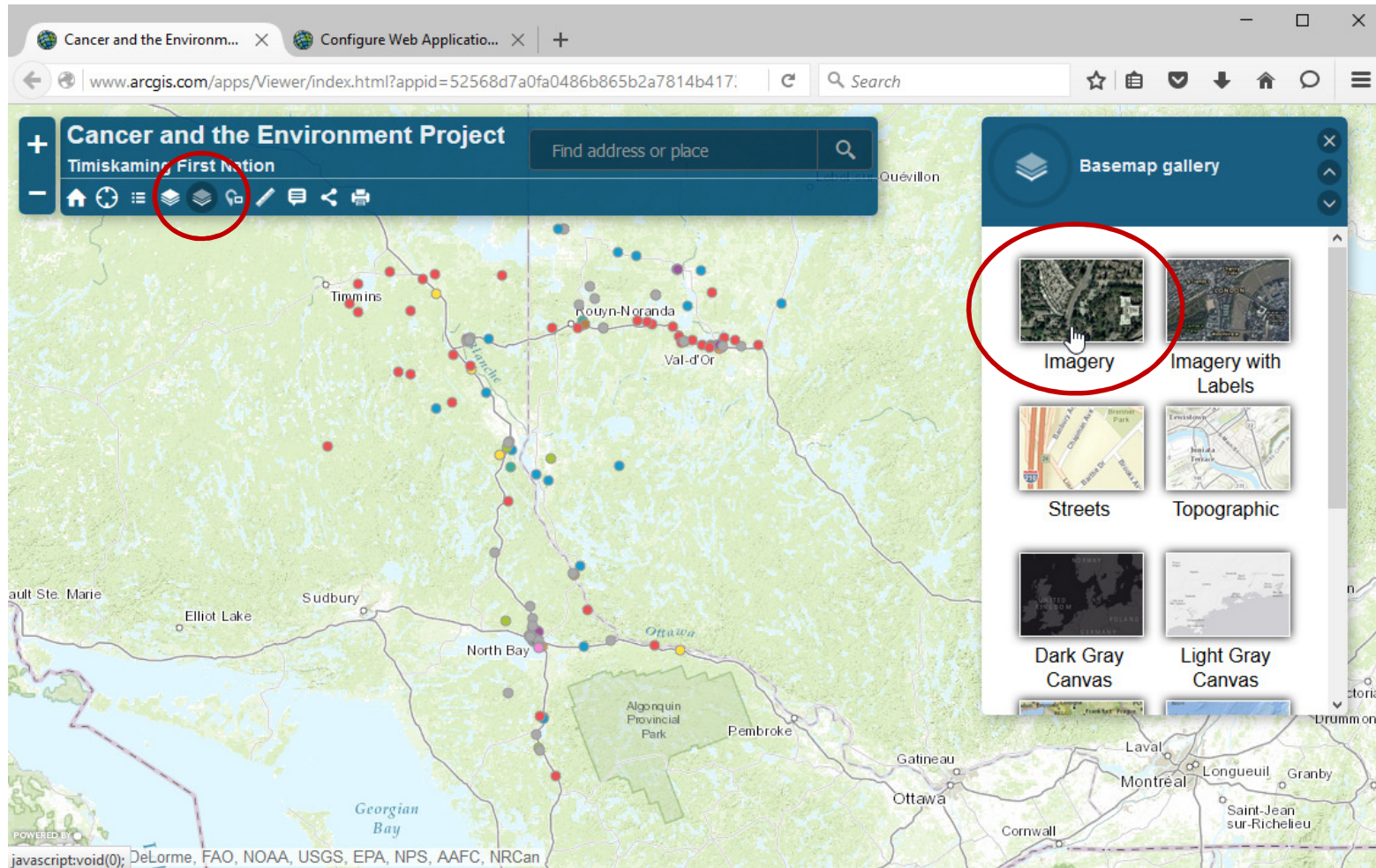
When the map is ready, the [Printout](#) link will appear. Clicking on the link will open a new webpage with your map displayed.



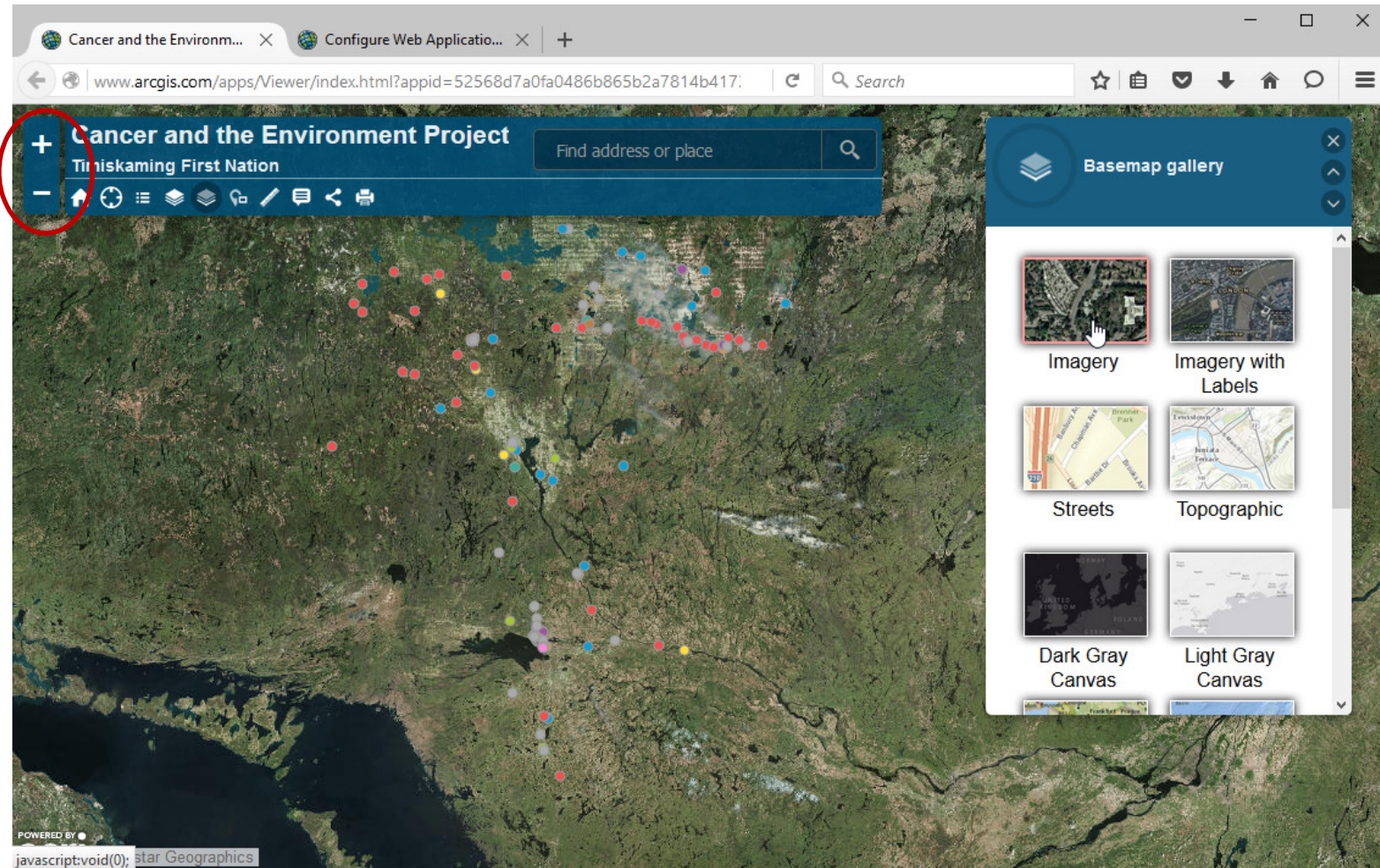
Your web browser may be different, but you should be able to print or download and save this map file to your computer, so you can email it to others or include in your own documents. Just close the webpage when you are done.



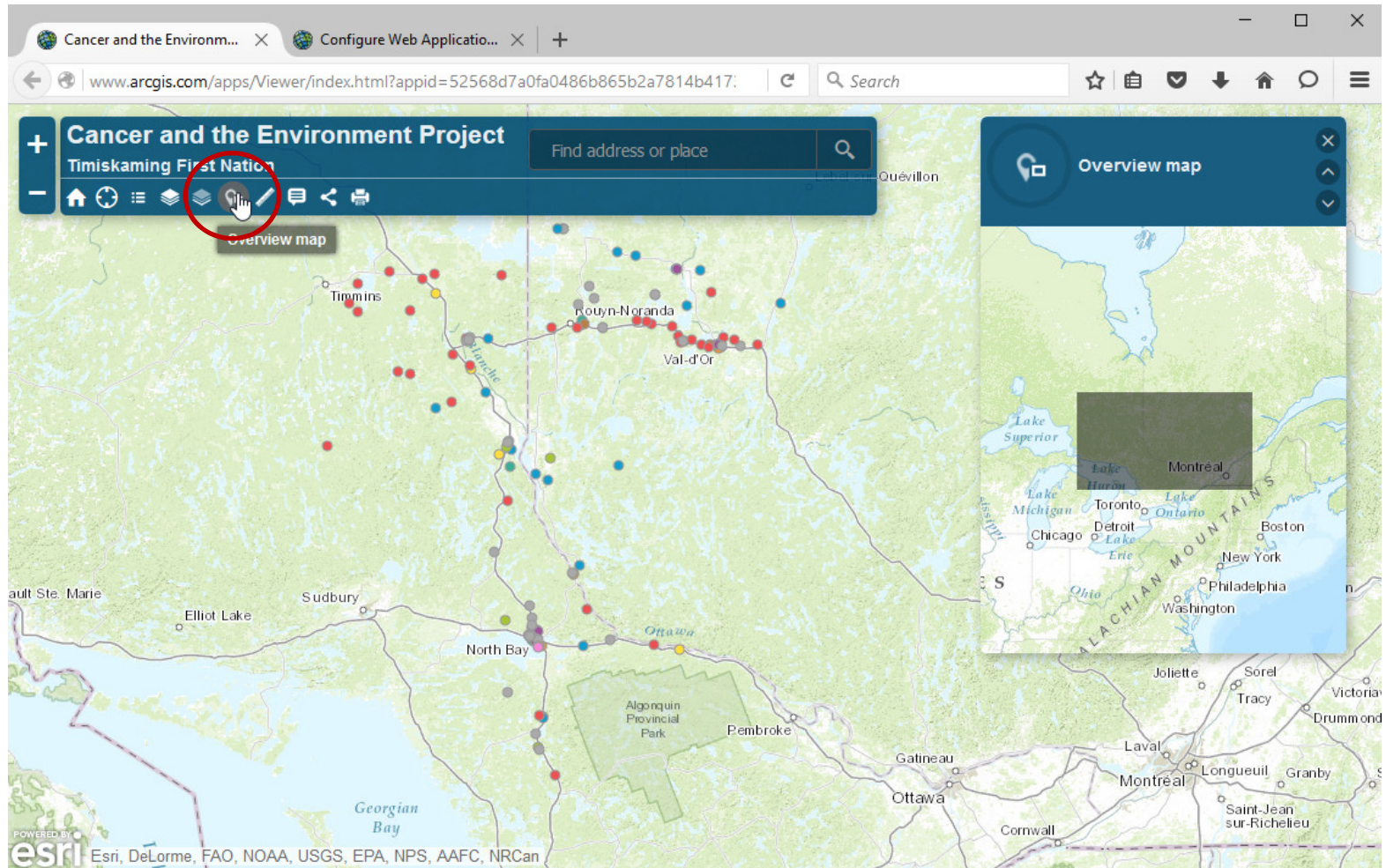
Use the LAYERS icon to show the list of layers.



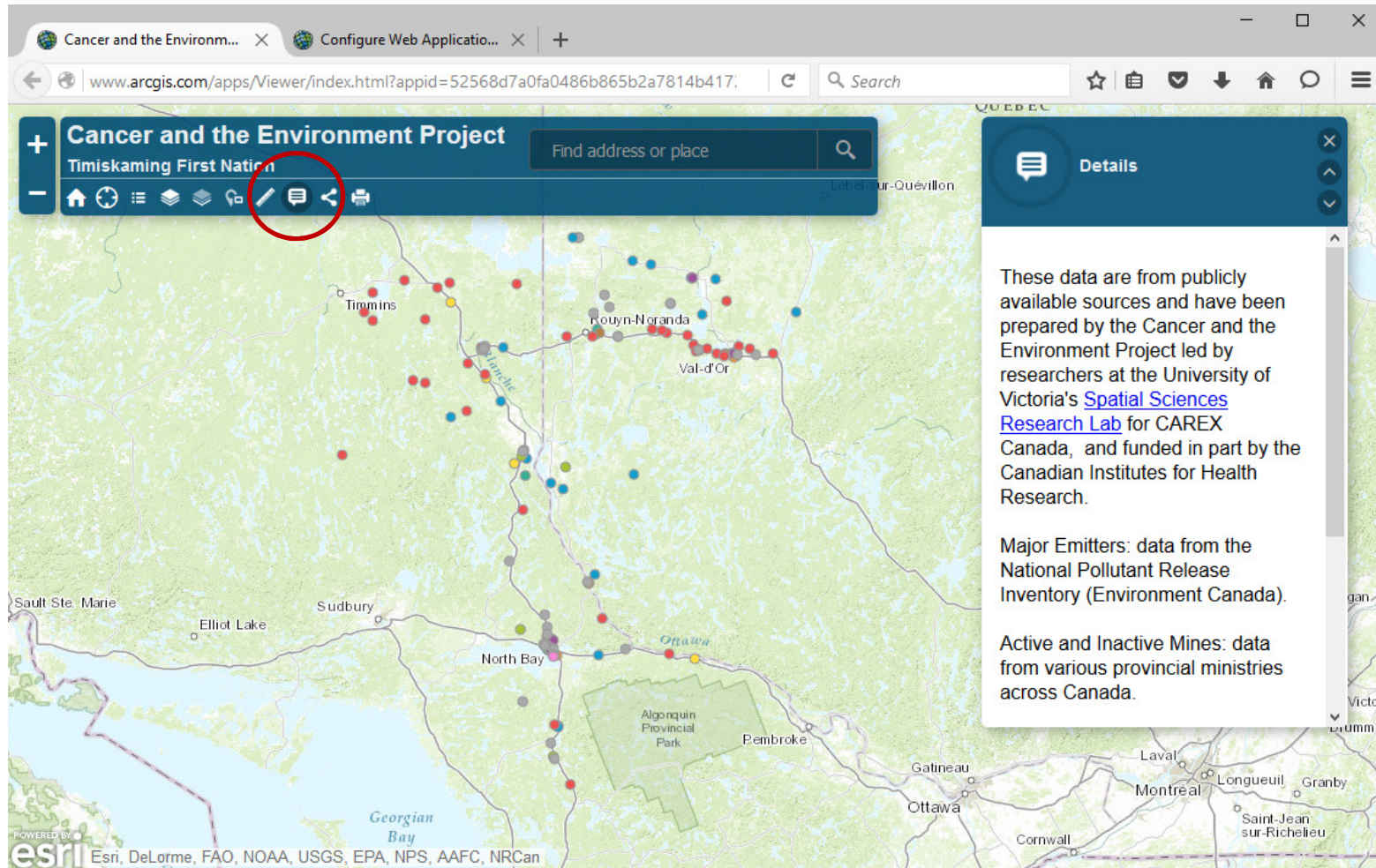
Use the BASEMAP GALLERY icon to change the background. For example, you can use aerial photos instead of the drawn map.



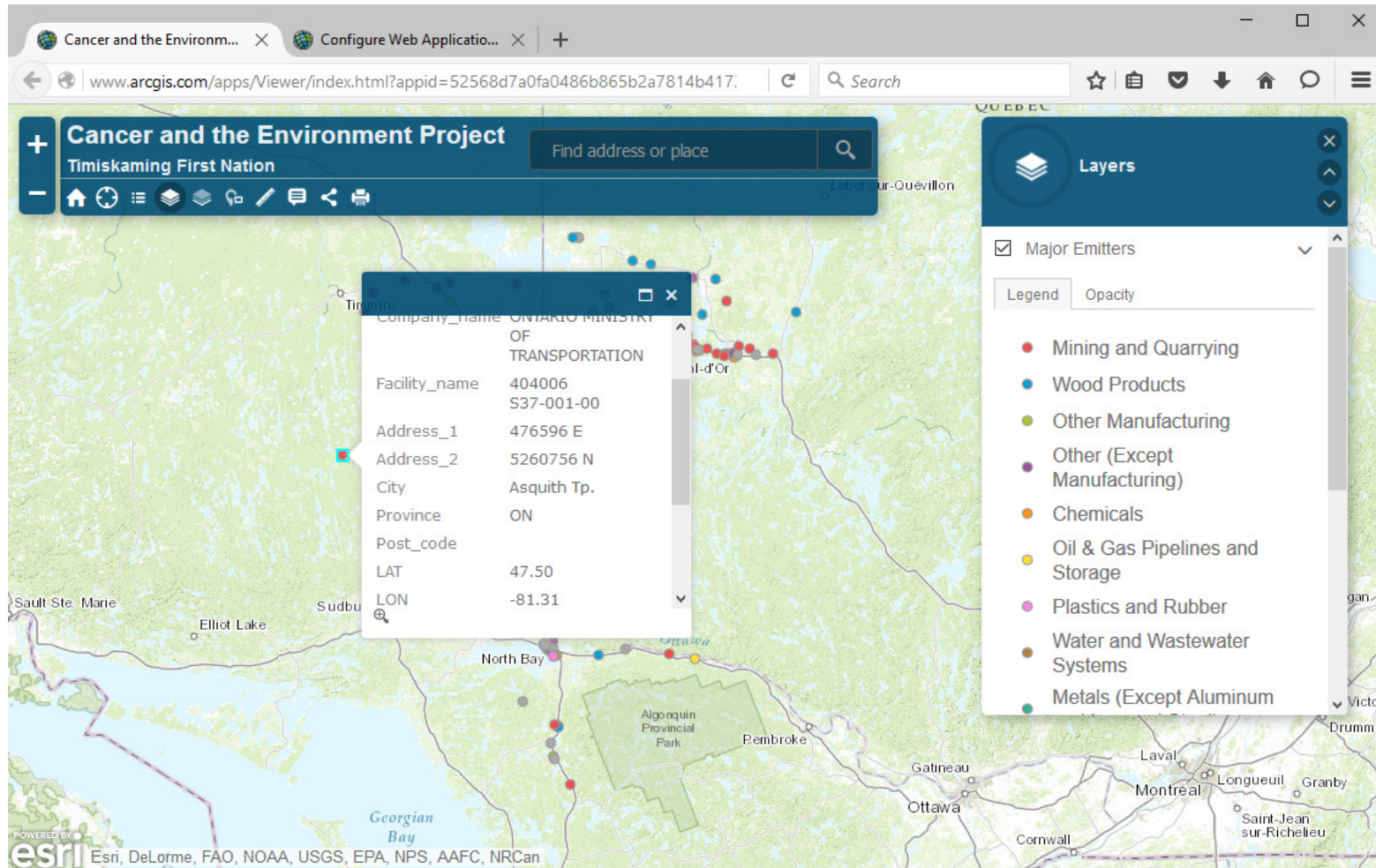
You can zoom in or out using the zoom tool in the upper left corner, or by using the scroll wheel on your mouse, if it has one.



Use the OVERVIEW MAP icon add an overview map that shows the area your are viewing in relation to a larger region.



Use the DETAILS icon to get more information about this browser and the data layers.



The data layer MAJOR EMITTERS contains information from industries reporting to the National Pollutant Release Inventory. Sites are coded by industrial sector. The popup box for each site has a link to more data on the NPRI website.

Cancer and the Environm... Historical Substance Repo... New Tab

ec.gc.ca/inrp-npri/donnees-data/index.cfm?do=facility_history&lang=En&opt_npri_id=(

Government of Canada / Gouvernement du Canada

Canada.ca | Services | Departments | Français

Environment and Climate Change Canada

Canada

Search

Explore the Topics Acts and Regulations Resources

Home > Pollution and Waste > Pollutants > National Pollutant Release Inventory > Pollution Data and Reports > Reported Pollution Data Search > Historical Substance Reports

Historical Substance Reports

Data as of: September 8, 2015

Return to NPRI Data Search

Return to 2014 Facility & Substance Information for Commonwealth Plywood Co. Ltd. - Belleterre

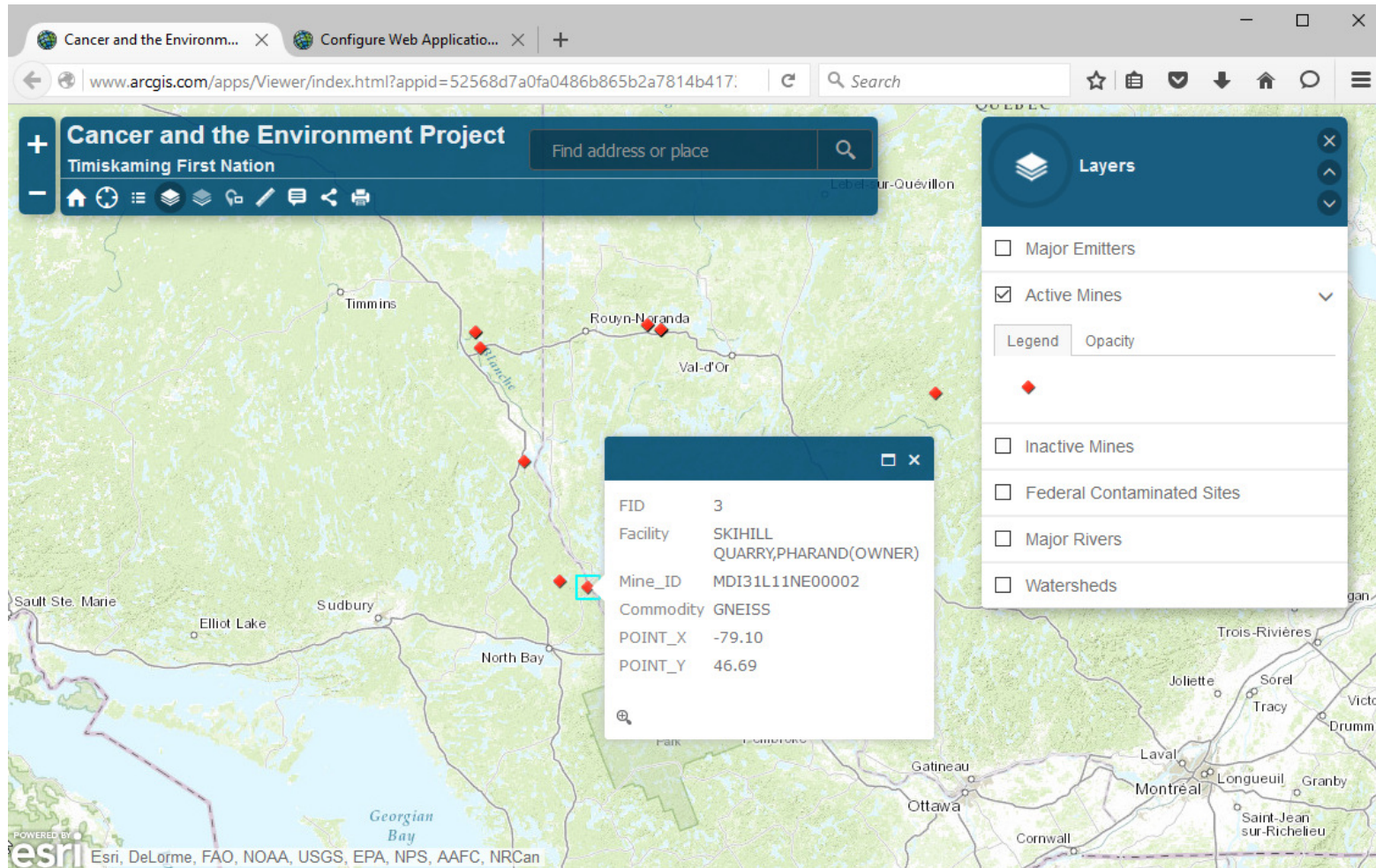
[Additional resources for accessing, understanding and analyzing NPRI data.](#)
[NPRI data is also available for download](#) in ACCESS and EXCEL formats.

Company/Facility information: Commonwealth Plywood Co. Ltd./Belleterre (2014)

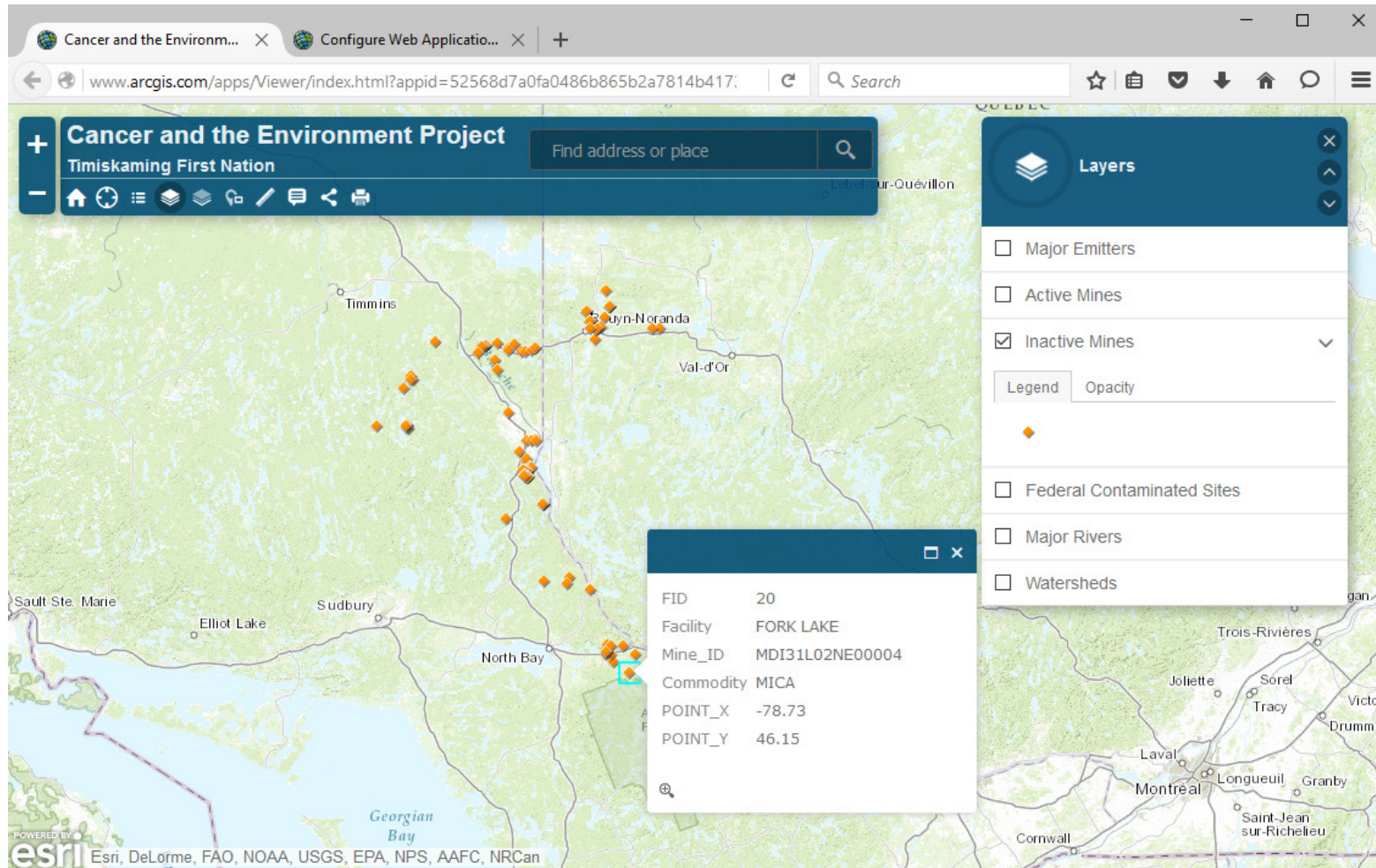
Information for Belleterre

Company
Commonwealth Plywood Co. Ltd.

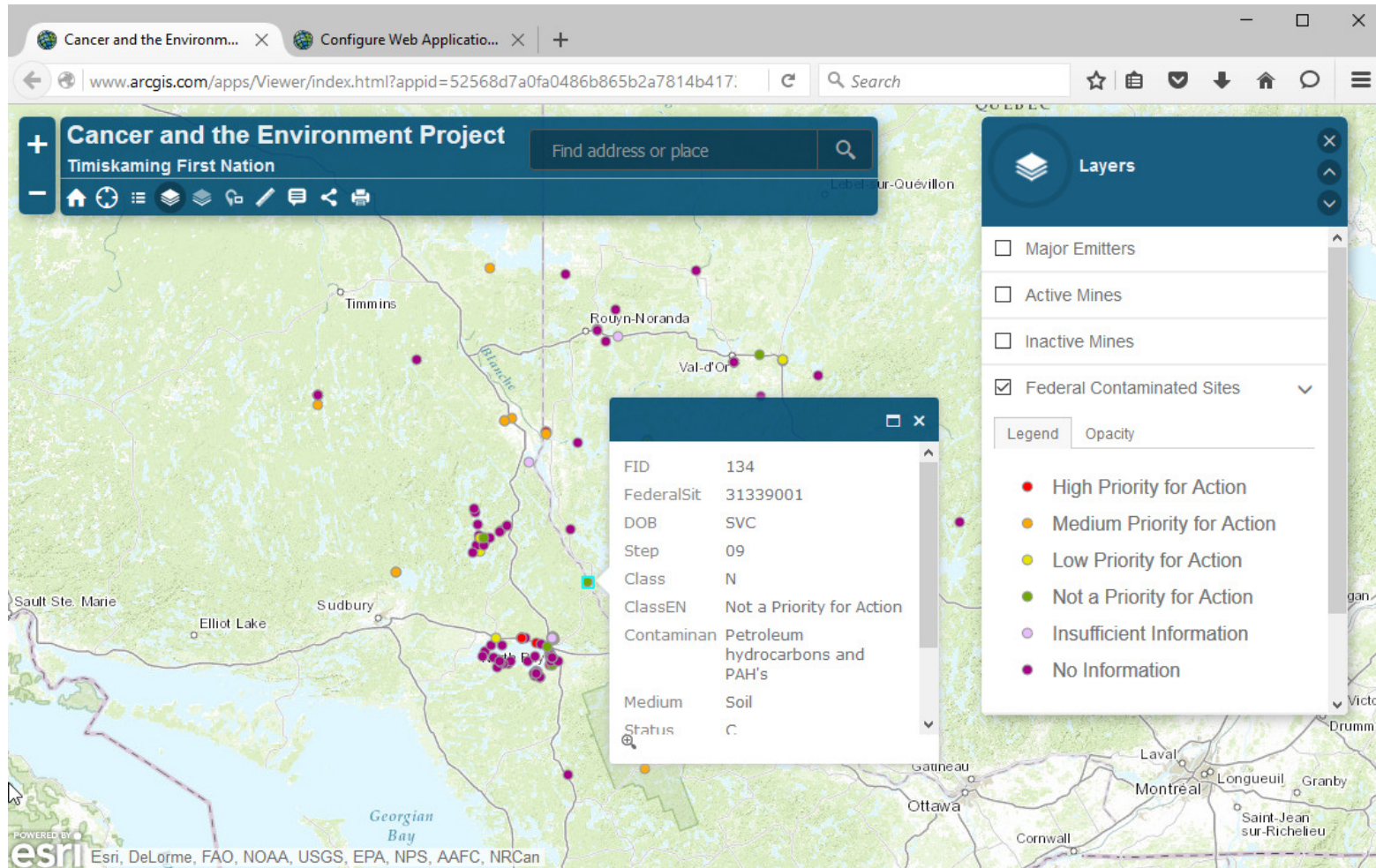
All emissions for each year since 2002 are reported here. Close the webpage when you are finished.



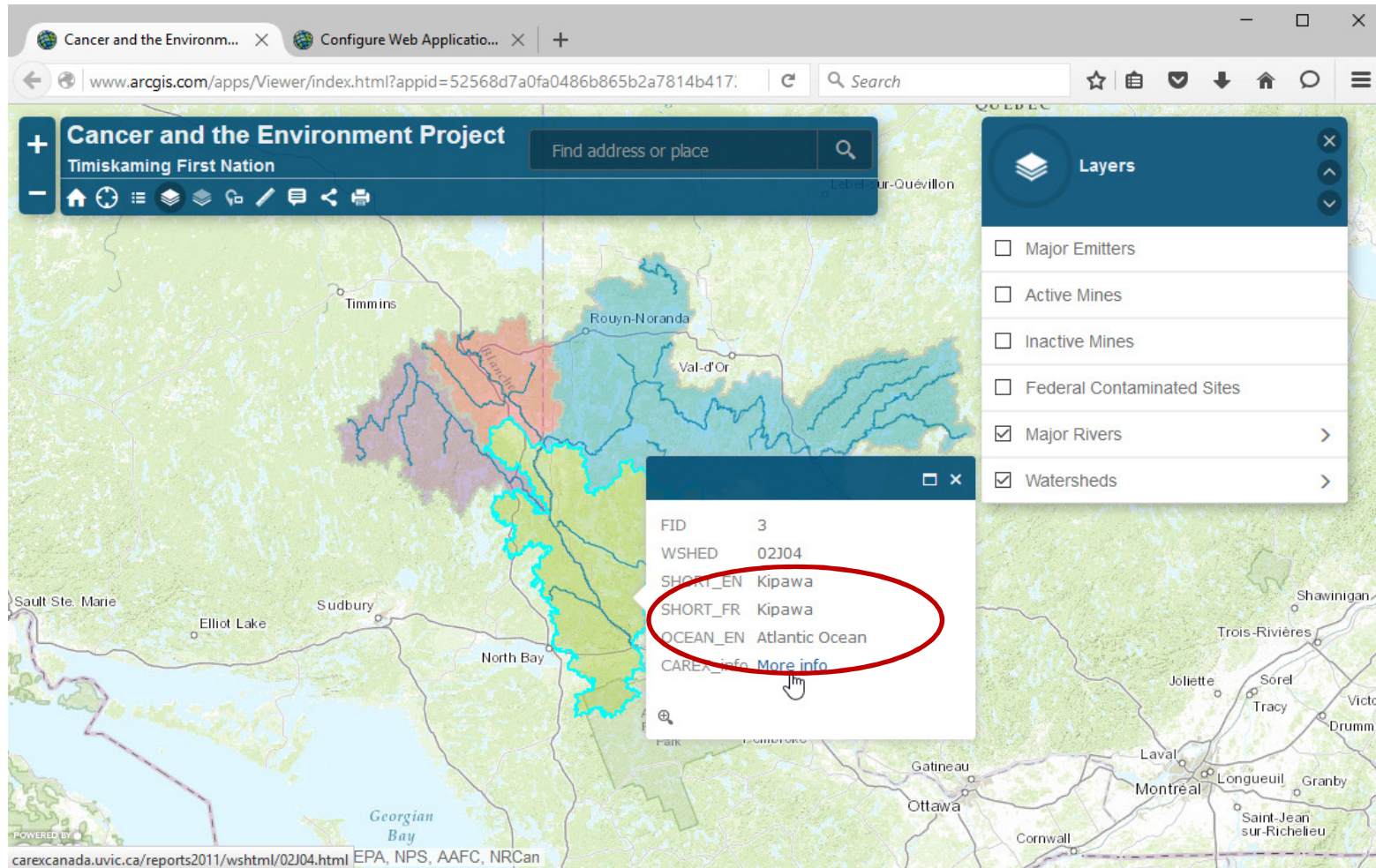
The data layer ACTIVE MINES contains information on mines active in 2010. The data were gathered from various provincial ministries by CAREX Canada staff at the UVIC Spatial Sciences Research Lab.



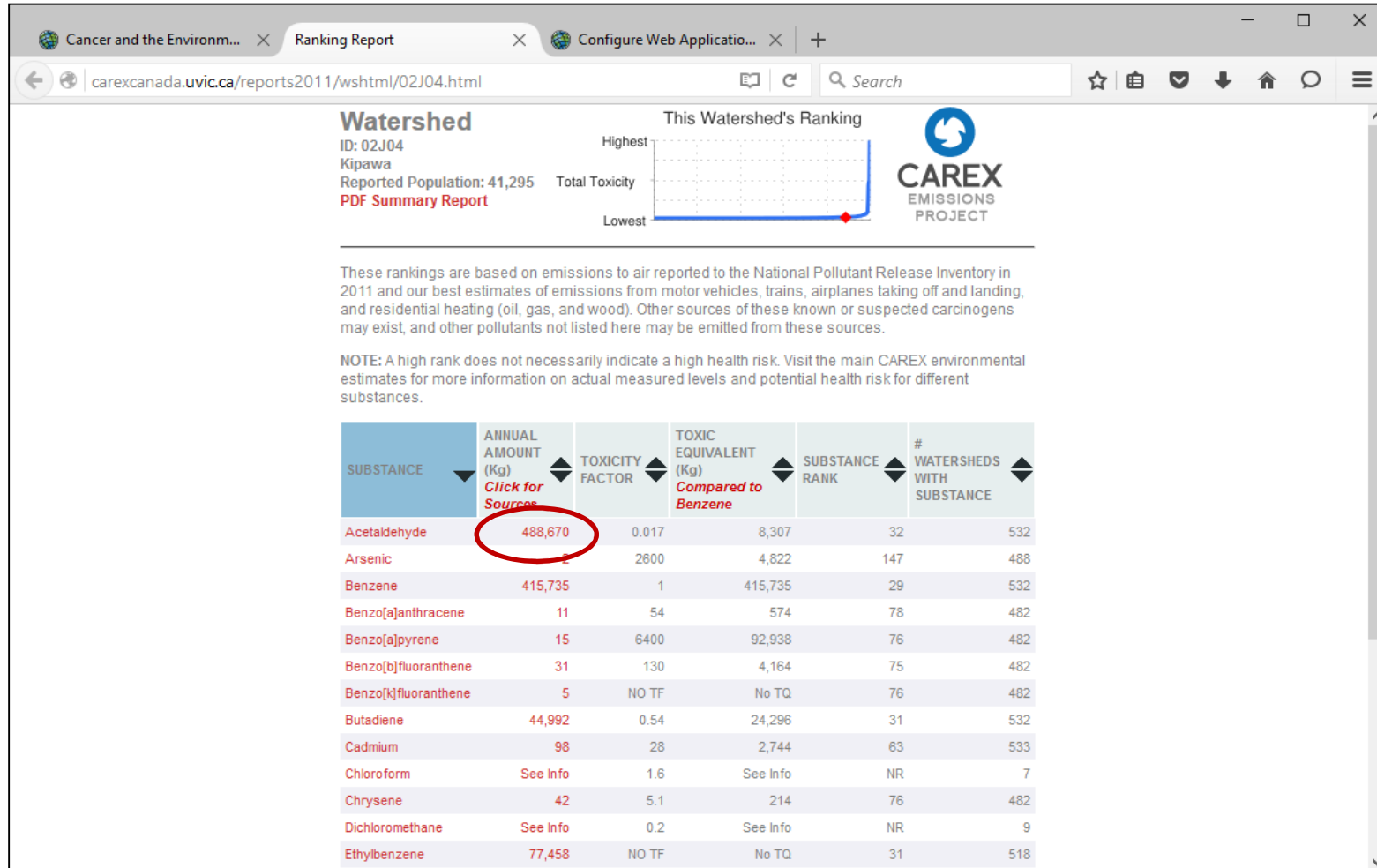
The data layer INACTIVE MINES contains information on mines no longer active in 2010. The data were gathered from various provincial ministries by CAREX Canada staff at the UVIC Spatial Sciences Research Lab.



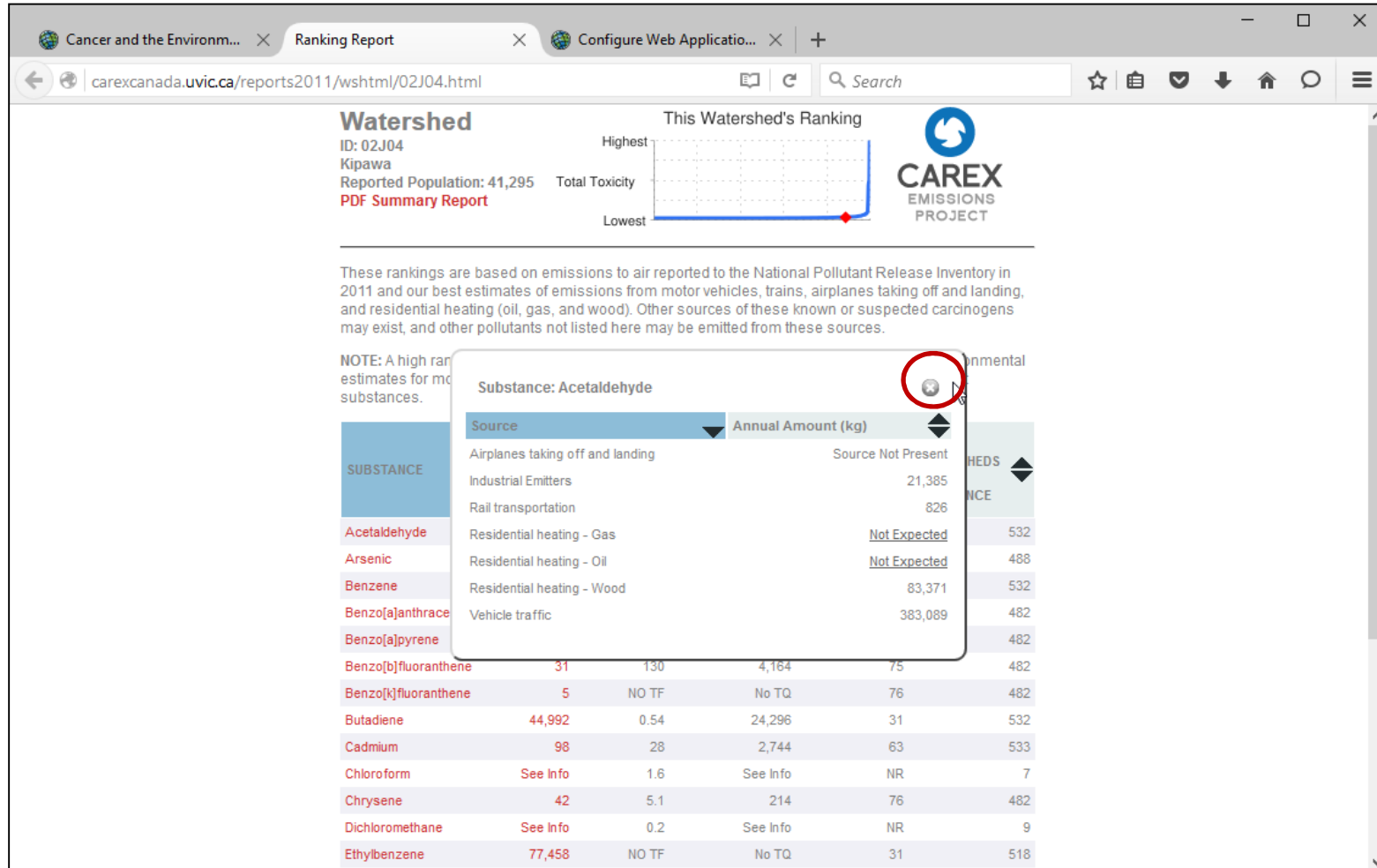
The data layer FEDERAL CONTAMINATED SITES contains information on sites reported to the Federal Contaminated Sites Inventory as of 2014. Priority for action is assigned by the federal government. Look in DETAILS for links to the data provider and more description of the data.



The data layer WATERDHED contains a link to the CAREX Canada summary of known and suspected carcinogens emitted in this watershed in 2011.



This table shows estimated emissions for the known and suspected carcinogens emitted in this watershed. Click on the Annual Amount to see how much is emitted by different sources.



ArcGIS - Timiskaming Firs... Cancer and the Environm... Ranking Report

carexcanada.uvic.ca/reports2011/wshtml/02J04.html

Watershed

ID: 02J04
Kipawa
Reported Population: 41,295
[PDF Summary Report](#)

This Watershed's Ranking

Highest
Total Toxicity
Lowest

CAREX EMISSIONS PROJECT

These rankings are based on emissions to air reported to the National Pollutant Release Inventory in 2011 and our best estimates of emissions from motor vehicles, trains, airplanes taking off and landing, and residential heating (oil, gas, and wood). Other sources of these known or suspected carcinogens may exist, and other pollutants not listed here may be emitted from these sources.

NOTE: A high rank does not necessarily indicate a high health risk. Visit the main CAREX environmental estimates for more information on actual measured levels and potential health risk for different substances.

SUBSTANCE	ANNUAL AMOUNT (Kg) <i>Click for Sources</i>	TOXICITY FACTOR	TOXIC EQUIVALENT (Kg) <i>Compared to Benzene</i>	SUBSTANCE RANK	# WATERSHEDS WITH SUBSTANCE
Acetaldehyde	488,670	0.017	8,307	32	532
Aroclor	2	2600	4,822	147	488
Benzene	415,735	1	415,735	29	532
Benzo[a]anthracene	11	54	574	78	482
Benzo[a]pyrene	15	6400	92,938	76	482
Benzo[b]fluoranthene	31	130	4,164	75	482
Benzo[k]fluoranthene	5	NO TF	No TQ	76	482
Butadiene	44,992	0.54	24,296	31	532
Cadmium	98	28	2,744	63	533
Chloroform	See Info	1.6	See Info	NR	7
Chrysene	42	5.1	214	76	482
Dichloromethane	See Info	0.2	See Info	NR	9
Ethylbenzene	77,458	NO TF	No TQ	31	518

www.carexcanada.ca/en/acetalddehyde/

Clicking on the substance name takes you to the CAREX Canada website page with more information about this substance.

Cancer and the Environm... X Ranking Report X CAREX Canada X Configure Web Applicatio... X +

www.carexcanada.ca/en/acetaldehyde/ Search

CAREX CANADA

Surveillance of environmental & occupational exposures for cancer prevention

ABOUT US | PROFILES & ESTIMATES | TOOLS & VIDEOS | NEWS | PUBLICATIONS

Home / Profiles & Estimates / Acetaldehyde – Profile [Print-friendly](#)

Full Profile

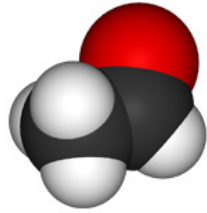
Subscribe to Our Newsletters

Follow @CAREXCanada

Acetaldehyde

INDUSTRIAL CHEMICALS – Possible Carcinogen (IARC 2B)

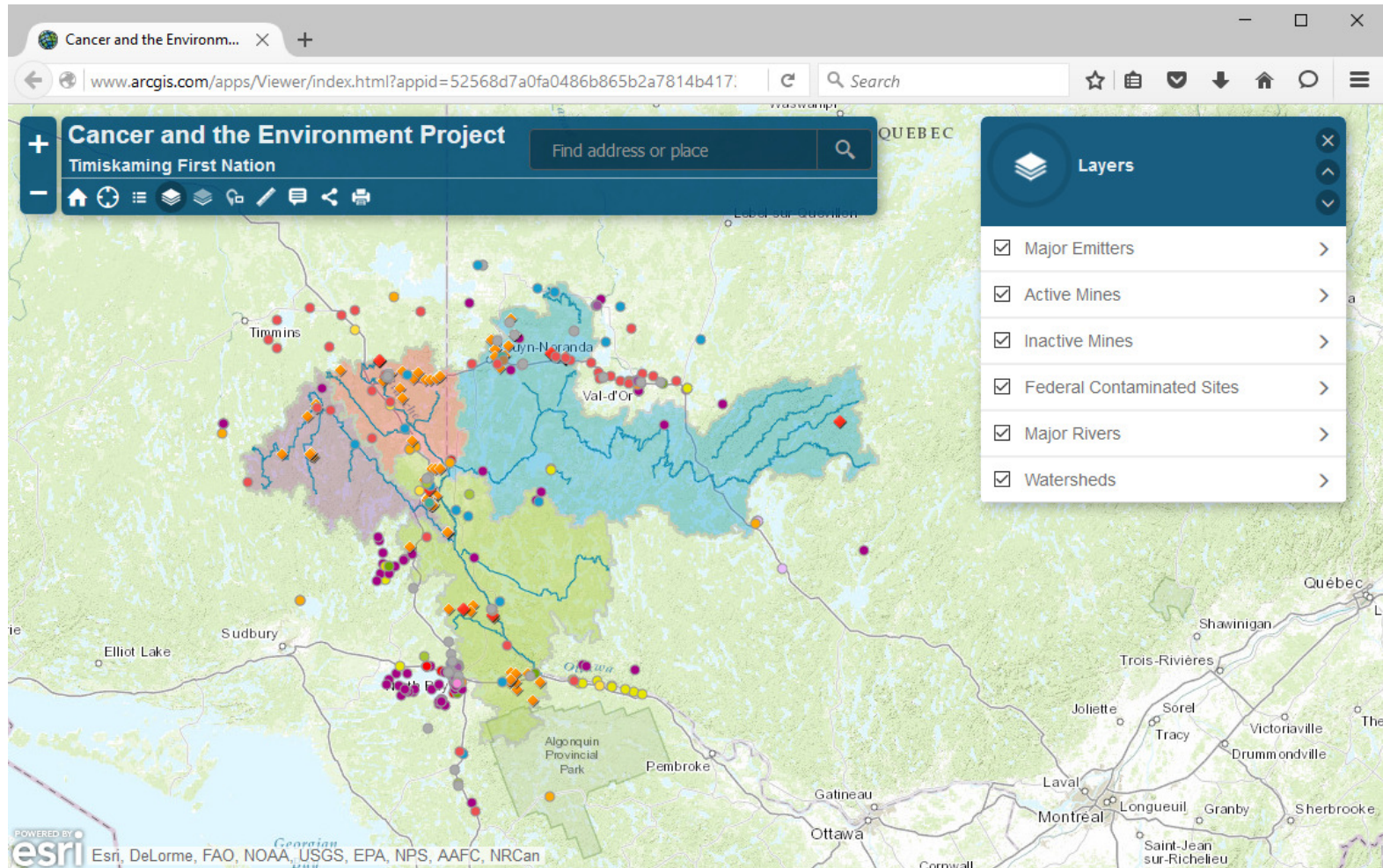
CAS No. 75-07-0



[General Information](#)
[Regulations and Guidelines](#)
[Main Uses](#)
[Canadian Production and Trade](#)
[Occupational Exposures](#)
[Environmental Exposures](#)
[Exposure Reduction](#)
[Sources](#)

Photo: Wikimedia Commons^[1]
IARC Monograph Vol. 71, 1999 (Group 2B)

You can find out more about known and suspected carcinogens here and explore the rest of the CAREX Canada website.



FOR MORE INFORMATION CONTACT INFO@CAREXCANADA.CA